



Where we ALL belong!

December 2025 Newsletter

In this issue:

- Thank You
- Press Conference- Olivia McGuire
- Story Vault
- Giving Space
- SSP2P Events
- Grays Harbor Bilingual Community Information & Education Program
- Brick to Brick
- SSP2P Resources, events & Support Groups
- Events by County
 - Grays Harbor, Kitsap, Mason & Thurston



All SSP2P offices will be closed
December 21st through December 3rd.



THANK YOU



Thank you, and a heartfelt thank-you to our anonymous donors, for your incredible support during Give Local!
Because of your generosity, we raised over

\$13,000

to strengthen and grow our Helping Parent Program!

Ann Vandeman
Maria Huang
Lauren Howard
E McCartan
Katherine Amerman
Anita Wells
Shannon Wilcox
Jindy Kailly Yantis
Shawn Thurman

Tosha Parker
Sara Finch
Jennifer Thacher
Phyllis Dobey
Trisha Byrne
Erin Solack
E Renae` Antalan
Erin Murray



A heartfelt thanks to **Natali and Michael Burgess** for their generous support of the Grays Harbor Bilingual Community Education & Information Program support groups. Their donation of Domino's pizza, along with plenty of treats and drinks, helped keep our families well-fed and comfortable during some of our events.

Thank you to **Toys for Tots** for their amazing donation of gifts! These will be shared with families at our upcoming Sensory Santa events, and we are so grateful for your generosity and support.

Thank you to **The Moore Wright Group** for their generous donations of hygiene kits, blankets, and many other essential items. Families have been able to take what they need home and put these resources to immediate use. We are so grateful for your partnership and care.

Building a Bridge to Belonging

Your Story is the Map

Join the SSP2P Story Vault & Guide Families from Isolation to Connection.



Share Your Journey

Why Share Your Story?



Inspires Families:
Shows new parents they are not alone.



Fuels Our Mission:
Helps us secure funding.



Builds Community:
We All Belong.

How to Share



Quick Email: Answer a few simple questions



Audio Story: Zoom call or voice note.



Short Video: Record on Zoom or your phone!

Ready to help Build the Bridge?
Click [HERE](#) or Scan to share your story!





WE NEED YOUR HELP!

We are so glad to see families using our Giving Space — that's exactly what it's here for! ❤️

Because of this increased need, our shelves are running low. Any and all donations, whether food or monetary, are deeply appreciated and go right back into the hands of local families.

Popular items that go quickly include:

- **Jam & jelly**
- **Breakfast cereal**
- **Pastas & pasta sauces**
- **Fruit squeeze pouches**



Thank you for helping us keep this space stocked with love, dignity, and support for every family. Together, we make a difference. ❤️

Please visit our website @ssp2p.org or click on QR code to give

SSP2P SUPPORT GROUPS

Support groups allow you to surround yourself with people who 'GET IT'



Mom to Mom

<https://www.ssp2p.org/mom-to-mom>

This is a laid-back and private space for moms raising kids with disabilities, developmental delays or chronic illnesses. Feel free to be yourself, share your stories, and know you'll always find understanding and zero judgement here. **We're in this together!**



Dad to Dad

<https://www.ssp2p.org/dad-to-dad-support>

Hey dads! Looking for a laid-back group to connect with other dads who get what you're going through? Join Jordan Kennedy at Dad to Dad, a casual meet-up for fathers raising kids with developmental delays or disabilities. We chat, share our stories, and support each other through the ups and downs.



Grays Harbor Community information & Education Program

<https://www.ssp2p.org/gh-community-info-education>

A safe and confidential space for moms raising children with developmental delays or disabilities. Share stories, celebrate wins and encourage each other through the challenges.



Sibshops <https://www.ssp2p.org/sibshops>

Sibshops are for siblings ages 7-18 who have a sibling with a developmental delay or disability. This FREE program is a fun way for 'sibs' to meet with peers who understand the challenges that can come with having a sibling with a disability. Play games, do crafts, connect and have fun! DINNER INCLUDED!



DDCS Town Hall

DDCS (Developmental Disabilities Community Services, formerly DDA)

Let's Discuss Intake & Eligibility!

South Sound Parent to Parent is hosting a DDCS Town Hall! Join us for a FREE, informative and supportive gathering with Doreen Vandervort, who will be available to answer your questions about how DDCS can partner with and assist your family.

Intake and eligibility staff will be on-site to:

- Guide families through the application process
- Provide one-on-one support
- Help you understand what DDCS services may be available for your family

All families are welcome, come learn, ask questions, and get connected to helpful resources! We want every family to feel supported.

***Please share any accommodations that would help you fully participate.
Support for Spanish-speaking families will be available.***



 **January 15, 2026**

 **3:00 PM – 5:00 PM**

 **SSP2P Office, 2108 Caton Way SW, Olympia**

 **Please register at www.ssp2p.org or by scanning the QR code.**



For questions, please contact:

Sylvia Davenport

Helping Parent/ Transition Program Director

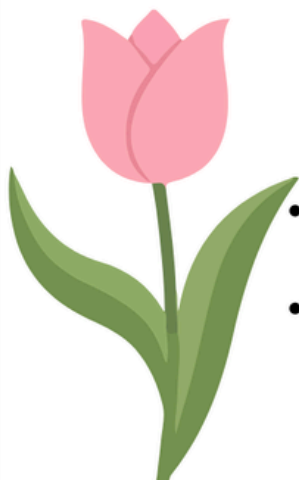
sdavenport@ssp2p.org / 360-352-1126



Do you care for a child with special needs and feel like you are alone?
 Are you adjusting to a new diagnosis for your child?
 Do you have questions about services and resources but don't know who to ask?
 Would you like to meet other parents who are raising children with special needs?

Please join us for

HOLLAND



Holland is an eight-week class where parents for children with special needs...

- Meet in a small group setting to share about the journey of raising a child with special needs
- Learn about grief and loss, self care, community resources and more

Our first session will be centered on the experiences and needs of families impacted by autism

*SEE BELOW FOR REGISTRATION
 Childcare Provided

"Holland...

It's just a different place. It's slower paced than Italy. But after you 've been there for a while and catch your breath, you look around...and you begin to notice that Holland has windmills... and Holland has tulips. Holland even has Rembrandts."

2026 Fall Holland Sessions

Wednesdays 5:30 pm - 7:30 pm Jan. 7, 14, 21 28; Feb. 4, 11, 18, 25. <i>English Language class</i> <i>Light refreshments provided</i>	2108 Caton Way SW Olympia South Sound Parent to Parent office	Sylvia Davenport & DeAnn Bogar
Wednesdays 5:30 pm - 7:30 pm March 11, 7, 18, 25; April 1, 8, 15, 25. <i>English Language class</i> <i>Light refreshments provided</i>	2108 Caton Way SW Olympia South Sound Parent to Parent office	Sylvia Davenport & DeAnn Bogar

MUST register by January 5, 2026 for classes starting January 7, 2026
 and by March 9, 2026 for classes starting March 11, 2026

Register by clicking on QR code or going to: www.ssp2p.org





Need Support? You're Not Alone

HELPING PARENT MATCH Peer Support For Families

South Sound Parent to Parent understands that raising a child with a disability, developmental delay, or chronic illness can sometimes feel overwhelming and isolating. That's why we offer one-on-one support through our Parent Match Mentorship, part of the Helping Parent Program.

A Helping Parent Mentor Can:

- Offer one on one support
- Listen and share experiences
- Offer encouragement without judgment
- Help you navigate complex systems
- Be a trusted support as you care for your child



Whether you need...

- Someone to talk to
- Help finding resources
- Or just a reminder that you've got this



Kimberly Adams
Kitsap County
360.818-4413
kadams@ssp2p.org



Angie Godinez
Mason County
360.462.0383
agodinez@ssp2p.org



Sylvia Davenport
Thurston County
360.352.1126
sdavenport@ssp2p.org

www.ssp2p.org





Parent Advisory Committee

South Sound Parent to Parent

Thurston • Mason • Grays Harbor

*Fresh ideas. Stronger connections.
Thriving communities.*

South Sound Parent to Parent is launching a Parent Advisory Committee, a collaboration of parents and caregivers from across Thurston, Mason, and Grays Harbor Counties to bring fresh ideas and cultivate community relationships.

Starting January 2026
Meets quarterly • Virtual
(online)
Specific days/times will be
set by the group at the
kickoff.

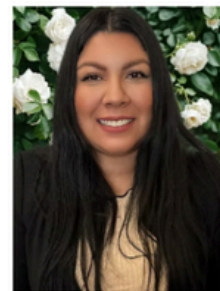
The meetings will be hosted by our Helping Parent and Community Information & Education (CIE) team once a quarter. If interested, please contact:



Sylvia Davenport
Thurston County
360.352.1126
sdavenport@ssp2p.org



Angie Godinez
Mason County
360.462.0362
agodinez@ssp2p.org



Sol Gonzalez
Grays Harbor County
360-637-8586
sgonzalez@ssp2p.org



SOUTH SOUND PARENT TO PARENT

SENSORY Skate Night!



Please join **South Sound Parent to Parent** for a fun and sensory, friendly family skate night.

Wheelchairs, strollers, and walkers are all welcome on the rink, everyone gets to glide, roll, and enjoy together!

***Admission is FREE. Concessions available at your expense- Cash Only**

February 15, 2026 / 5:00PM - 7:00PM
Skateland: 2725 12TH Ave. NE Olympia

For more information, please contact:

Sylvia Davenport- 360.352.1126 sdavenport@ssp2p.org


Angie Godinez- (ENG) 360.462.0383 / (SPA) 360.462.0362 agodinez@ssp2p.org

Sol Gonzalez- 360.612.1324 sgonzalez@ssp2p.org



No registration required
Exclusively for past and current SSP2P families.





GRAYS HARBOR

Programa Bilingüe de Información y Educación Comunitaria



Sol Gonzalez

Coordinadora Bilingüe de Información
y Educación Comunitaria
(360) 637-8586
sgonzalez@ssp2p.org



Sol Gonzalez

Bilingual Community Information
& Education Coordinator
(360) 637-8586
sgonzalez@ssp2p.org



¡South Sound Parent to Parent se complace en traer un nuevo programa a Grays Harbor! El Programa Bilingüe de Información y Educación Comunitaria es un excelente recurso para familias que crían a un hijo con un retraso o discapacidad del desarrollo. Este incluirá:

- Apoyo emocional
- Recursos comunitarios
- Apoyo del IEP
- Mentoría entre padres
- Grupo de apoyo de mamá a mamá
- Grupo de apoyo de papá a papá
- ¡Educación para padres y mucho más!

GRAYS HARBOR

Bilingual Community Information & Education Program

South Sound Parent to Parent is excited to bring a new program to Grays Harbor! The Bilingual Community Information & Education Program is a great resource for families raising a child with a developmental delay or disability. It will include:

- Emotional support
- Community resources
- IEP Support
- Peer mentorship
- Mom to Mom Support Group
- Dad to Dad Support Group
- Parent education and more!



Thank you to all the families who joined us today for our Thanksgiving Potluck!

I am truly grateful for each and every family and for the trust you have placed in me and in this program. Thank you for sharing your time, your smiles, and the delicious dishes that made this day so special. This space allowed us to connect, strengthen bonds, and continue building a united and supportive community.

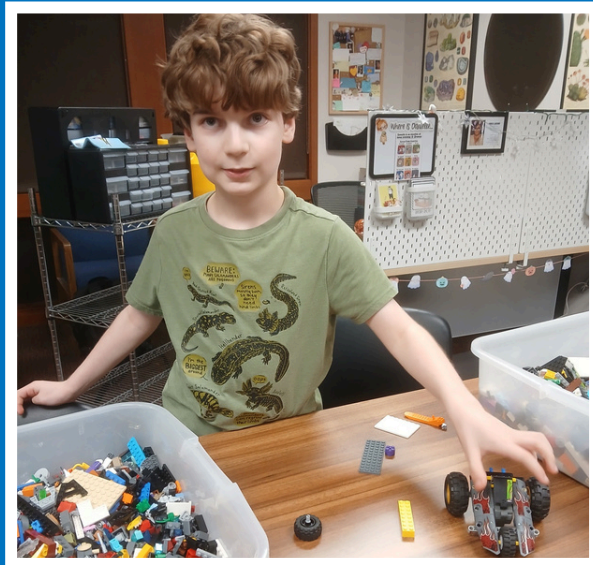
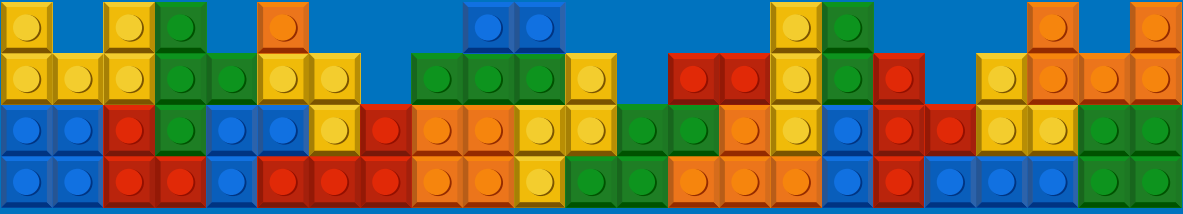
Wishing you all a very Happy Thanksgiving with your loved ones!

Sol Gonzalez

Bilingual Community Information & Education Coordinator



Our Brick to Brick group meets once a month, giving youth a welcoming space to practice social skills, make new friends, and enjoy creative, hands-on activities.



Grays Harbor County Resources & Community Events.

Please visit Grays Harbor Resources on our website to view full list.
<https://www.ssp2p.org/grays-harbor>

SIMPLY PAINT

SATURDAY, DECEMBER 6
10 AM - 12 PM



Teens & Adults



YOU MUST REGISTER FOR THIS PROGRAM.
REGISTRATION WILL OPEN 2 WEEKS PRIOR TO THE EVENT.



ENJOY A RELAXING MORNING OF PAINTING.

WE WILL BE PAINTING A COLORFUL VILLAGE IN THE SNOW ALONG WITH VIDEO INSTRUCTIONS FOR YOU TO FOLLOW.

PROJECTS ARE SUITABLE FOR ALL SKILL LEVELS. SUPPLIES ARE PROVIDED.

Elma Timberland **LIBRARY**
119 North 1st Street • TRL.org • 360.482.3737



KIDS' WINTER Extravaganza

Saturday, December 6
2:00-4:00 pm

Children and their families are invited to come play board games, do crafts, and create the perfect cup of cocoa from our hot chocolate bar!



Elma Timberland **LIBRARY**
119 North 1st Street • TRL.org • 360.482.3737



Grays Harbor Early Childhood and Family Support Resources

Grays Harbor Early Learning Coalition. YOUR Local Coalition! (GHELC) promotes early learning as a community priority to ensure that every child and family in Grays Harbor County has access to quality early childhood programs that foster healthy development, safety, early literacy, and parental support and education. Scan the QR code to get connected!



ghearlylearningcoalition@gmail.com



NEED MORE HELP FINDING RESOURCES? CONNECT WITH A FAMILY NAVIGATOR.



Help is available in all languages for:

- Food resources (basic food, food stamps, WIC, and local food banks).
- Free or low-cost health insurance.
- Child development resources.
- Immunization and parenting resources.



Call the Help Me Grow Washington Hotline at 1-800-322-2588 or visit HelpMeGrowWA.org

Part of the WithinReach family

Grays Harbor Early Childhood and Family Support Resources



Text

KIDSWA

To 274 448

www.mylantern.org

WANT TO KNOW ABOUT FREE, LOCAL EVENTS?

Easy, practical tips and information for parents & caregivers of **kids birth - 11 yrs old.**

Information about **FREE** services and events based on your zip code.

LOOKING FOR CHILD CARE? PRESCHOOL?

- Help finding child care,
- Determine if you qualify for financial assistance,
- Get more information about child care services, and more!



Call our Family Center at 1-800-446-1114 or email familycenter@childcare.org

SIMPLE & FUN WAYS TO INTERACT WITH YOUR CHILD



Vroom Tips™ help you do more with your shared moments. Add learning to mealtime, bathtime, bedtime, or anytime with 1,000+ fun, free activities.

Kitsap County Resources & Community Events

Please visit Grays Harbor Resources on our website to view full list.
<https://www.ssp2p.org/kitsap>



SENSORY TIME MOVIE

SeeFilm presents a sensory friendly movie experience the lights turned down low, sound turned down, and "Silence is Golden Policy will not be enforced unless for safety reasons."



MOVIE LINE UP

GABBY'S DOLLHOUSE: THE MOVIE
Sept. 27th, Saturday

WICKED FOR GOOD
November 22nd, Saturday

ZOOTOPIA 2 *THANKSGIVING WEEKEND
November 29th, Saturday

THE SPONGE BOB MOVIE: SEARCHING FOR SQUAREPANTS
December 20th, Saturday



655 4th ST, BREMERTON
EMAIL: KIMBERLY

FACEBOOK: SENSORY FRIENDLY EVENTS - KITSAP
sensoryfriendlyeventskitsap@gmail.com

SHOW TIME - 11:00 AM
DOORS OPEN - 10:45 AM
\$6 TICKET
1 CAREGIVER
FREE FOR EACH TICKET
PURCHASED



Children living with **T1D** Type 1 Diabetes **EXPO**



Dec. 3, 2025 | 5-7 p.m. | Haselwood YMCA
3909 NW Randall Way, Silverdale

Are you a child, parent, or caregiver of someone with Type 1 Diabetes?

Come join us to:

- Find community and support
- Listen to a youth-led panel about living with T1D
- Learn about the newest technology
- Speak to endocrine specialists, school nurses, and nutritionists
- And more!

Questions?

Contact Janet.Wyatt@KitsapPublicHealth.org | 360-265-0990

Children and Youth with Special Healthcare Needs Coordinator

Port Orchard's **HOLIDAY ON THE BAY**

December 6th | 3pm -8pm

<https://www.pobsa.com/holiday-on-the-bay>

Mason County Resources & Community Events

Please visit Grays Harbor Resources on our website to view full list.
<https://www.ssp2p.org/mason>

SHELTON TIMBERLAND LIBRARY
WINTER ART MARKET
SATURDAY, DECEMBER 13, 11AM-2PM
MAKER SPOTLIGHT: LLYN



"I write and weave and sometimes make hats and scarves. I give all credit to my life on Oyster Bay, a place of beauty, peace, and deep history."

Shelton Downtown Merchants

Cookie Stroll

Dec. 13
12-5pm



Thurston County Resources & Community Events

<https://www.ssp2p.org/thurston>



November 21 - January 19

olyonice.com

Sensory Friendly Skate

The *first hour* on **Sundays and Mondays** is reserved for a calmer skating experience. Lights are turned low and music is off to create a sensory-friendly environment.

Location: Isthmus Park, 529 4th Ave W, Olympia, WA

Guests using mobility aids may skate with staff assistance when available and safe.

Email olympia@icerinkevents.com for accessibility questions.



https://www.olympiawa.gov/services/parks_recreation/oly_on_ice.php



2025 SANTA MOBILE

SANTA IS COMING! THE SANTA MOBILE WILL BE MAKING ROUNDS THROUGH LACEY AREA NEIGHBORHOODS IN DECEMBER. SANTA STOPS WILL BE INCORPORATED ON THE DAYS AND ROUTES NOTED BELOW. ESTIMATED TIME TO EXPECT SANTA ACTIVELY CRUISING IN NEIGHBORHOODS WILL BE BETWEEN 6:30 - 7:30PM.

EACH NIGHT SANTA WILL LEAVE THE LFD3 TRAINING & EDUCATION CENTER ON STEILACOOM RD AT 6:00PM.

WEDNESDAY, DEC 3RD	Chatham, Stonewood, Deerbrush, Ridgeview Drive
FRIDAY, DEC 5TH	Boardwalk, Park Place, Jackson Farm- SANTA STOP at Rainier Vista Park
MONDAY, DEC 8TH	McAllister Park, Hidden Springs, Evergreen Estates, Ovation-SANTA STOP at Evergreen Forest Elementary
WEDNESDAY, DEC 10TH	50th Ave SE, Sarazen, Beckonridge Loop, Bonaventure
FRIDAY, DEC 12TH	Campus Glen, Campus Park, Christa Heights- SANTA STOP at Salish Middle School
TUESDAY, DEC 16TH	Edgewater, Silverhawk, Campus Highlands Drive
WEDNESDAY, DEC 17TH	Wilderness, 45th Ave/Loop SE, Glenmore
FRIDAY, DEC 19TH	Lakepointe, Thornbury, Horizon Pointe-SANTA STOP at Horizon Pointe Park

YOU CAN TRACK SANTA AND HIS ELVES BY GPS AT:
www.glympse.com/!santamobile or by downloading the Glympse App.



Seasonal Drop-In Spaces at Pear Blossom Place Family Shelter

Daily from November 1st through April 30th

837 7th Ave SE Olympia, WA 98501

- First come, first served
- Open 5:00pm - 10:00am
- What's provided: Indoor tents, mats, and bedding
- 24/7 staffing
- On-site parking
- RSO checks
- Secure facility

Families must have a child or a pregnant person present at the time of check-in. No ID or proof of pregnancy is required. For safety, all adult names will be checked through the national database to ensure they are not registered sex offenders.



Questions about drop-in shelter?
Call 360-628-7343



The JBF Olympia Sale is NEXT WEEK ! Fall/Winter Sale Event ~ December 4-7
(Early Access Shopping ~ Wednesday, December 3)

EVERYTHING CHILDREN'S & MATERNITY RESALE!

Hawks Prairie - Former Rite Aid

8230 Martin Way E. | Lacey 98516

Shop Early: Wed, Dec 3rd (12-7pm)-Tickets Required

Public Sale: Thurs, Dec 4th - Sun, Dec 7th

Get FREE Tickets & Early Access Tickets: <https://olympia.jbfsale.com/gettickets>